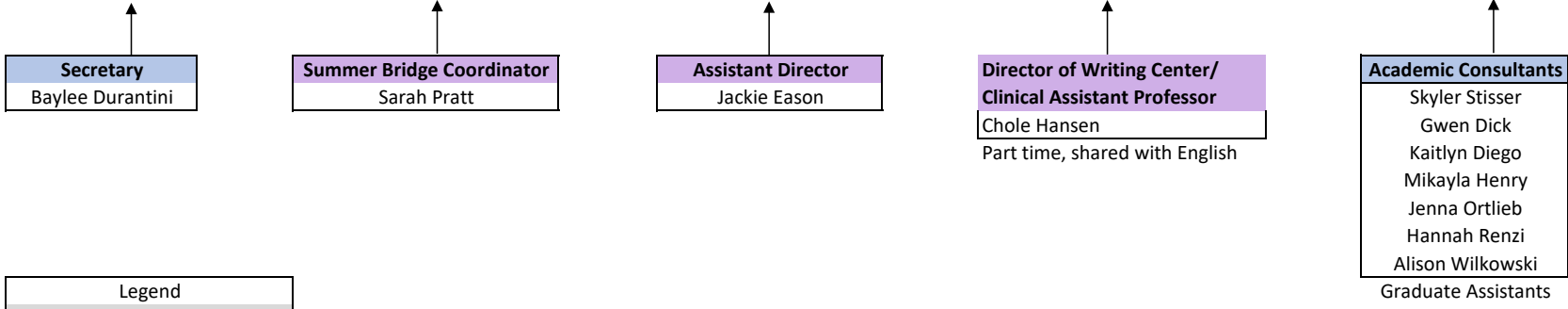


Provost and Chief Operating Officer
Beth Ann Dobie

Center for Academic Success - 2023-24
Chris Gause, Director



Legend	
Top Level	Grey
Administrators	Purple
Support Staff	Light Blue
Divisions	Light Orange
Programs	Light Blue
Visting Faculty	Light Green
Non-tenure Track Faculty	Yellow
Tenure track	White
Technical Specialists	Orange