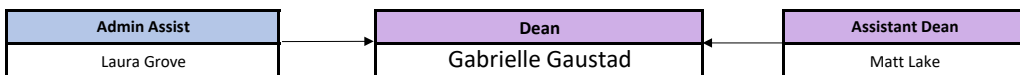


Inamori School of Engineering- Fall 2025



Statutory Engineering	
Glass	BME
Doris Möncke - GSE Chair	Anthony Wren-BME Chair
Eliza Sidenstecker - Admin	Eliza Sidenstecker, Admin
Collin Wilkinson - GSE	Timothy Keenan, BME
Ben Moulton - GSE	
Rebecca Welch - GSE	

CER
Yiquan Wu - CE Chair
Eliza Sidenstecker, Admin
Myungkoo Kang, CE
Caccia, Mario CE
Caio Bragatto CE
Abhijit Pramanick CE

Tech Specialists
S. Zdzieszynski
Darren Stohr
Fran Williams
Erin Taylor
Josh Robinson
Jarrood Keesler

MSE
S.K. Sundaram - MSE Chair
Eliza Sidenstecker, Admin
Junjun Ding - MSE
Scott Mixture - MSE
Steve Pilgrim - MSE
Steven Tidrow - MSE
Kun Wang - MSE

Adjunct for Fall 2025
Darren Stohr
John Simmins
Tim Cox
James Mighells
Arron Potter

Non-Statutory Engineering		
MECH	RNEW	ELEC
Amit Maha - Chair	Dan Lu - Chair	Xingwu Wang - Chair
Josiah Alexander, Admin	Josiah Alexander, Admin	Josiah Alexander, Admin
Seong-Jin Lee - MECH	Xingwu Wang-REE	Jalal Baghdadchi
Ehsan Ghotbi - MECH	Junpeng Zhan-REE	
Mehdi Kabir-Najafi - MECH	Jalal Baghdadchi - REE	
Nikta Amiri - MECH		

Research Faculty
William Carty
Alastair Cormack
William LaCourse
Holly Shulman
Alexis Clare
Stuart Yaniger

Director of Vernova Lab
John Simmins

Director of Communications
Carole Volpe

Director of Museums & Galleries
Claire Kovacs

Tech/Tech. Spec.
Jim Mighells(Step Lab)

Post-Doc
Iva Milisavljevic
Thomas Bordeau
Arron Potter (PostDoc Rsrch)

CACT
David Gottfried-CACT Director
Laurie Graziano, Secretary
Hyojin Lee - Research Director